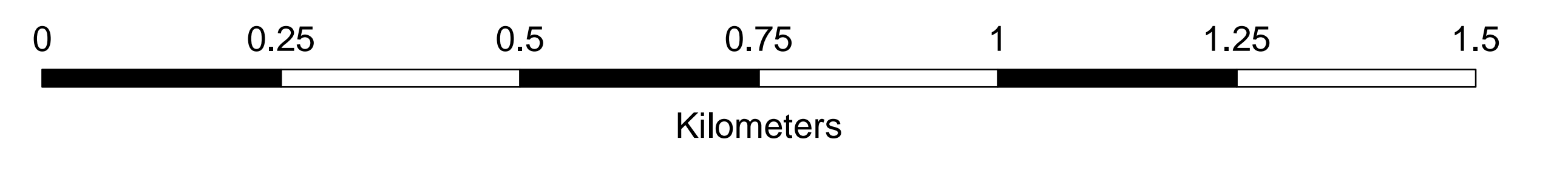
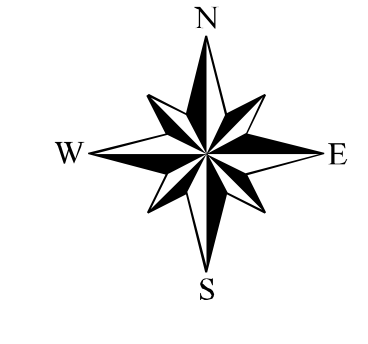
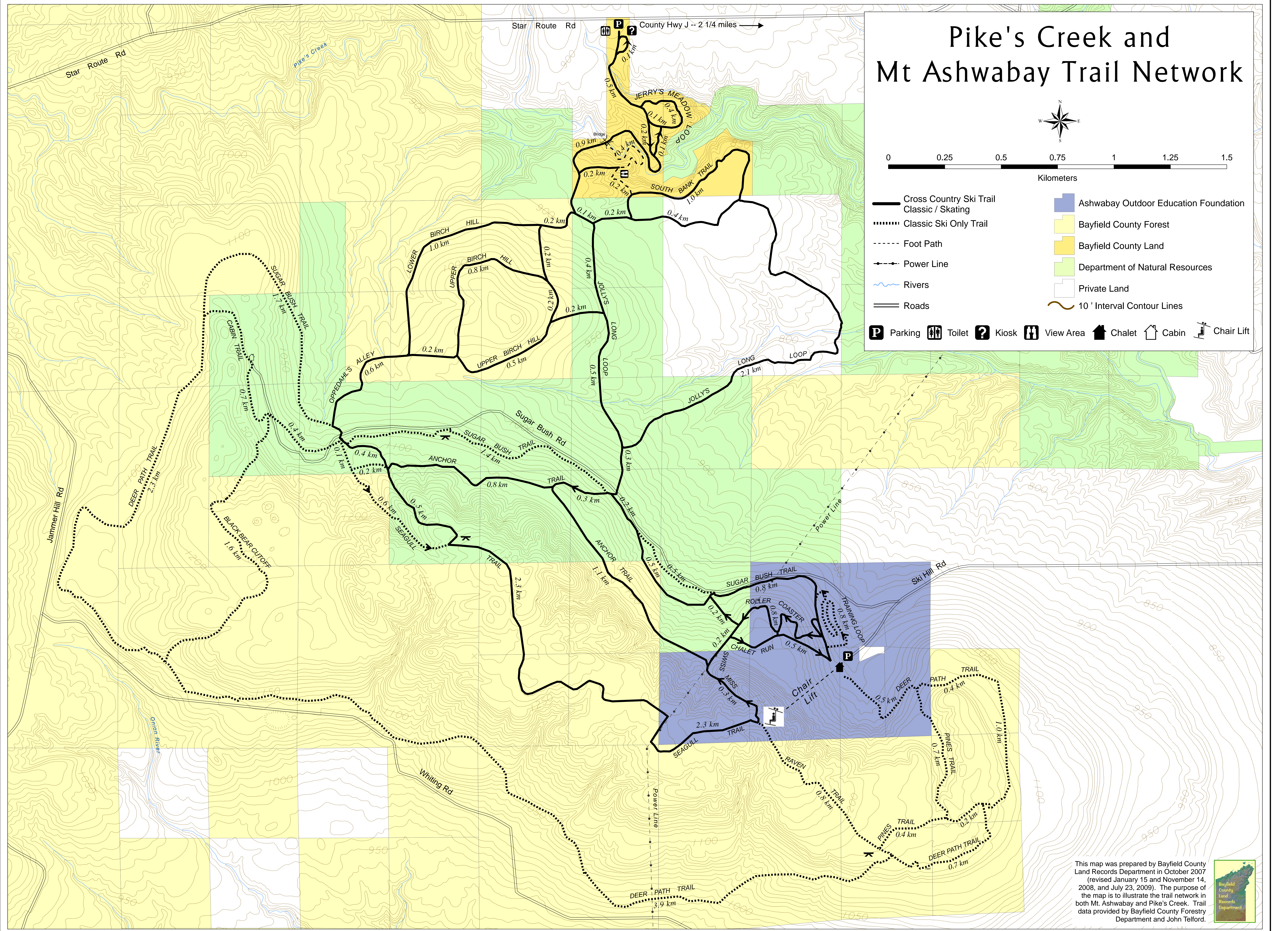


Pike's Creek and Mt Ashwabay Trail Network



- Cross Country Ski Trail
Classic / Skating
- Classic Ski Only Trail
- Foot Path
- Power Line
- Rivers
- Roads
- Ashwabay Outdoor Education Foundation
- Bayfield County Forest
- Bayfield County Land
- Department of Natural Resources
- Private Land
- 10' Interval Contour Lines
- Parking
- Toilet
- Kiosk
- View Area
- Chalet
- Cabin
- Chair Lift



This map was prepared by Bayfield County Land Records Department in October 2007 (revised January 15 and November 14, 2008, and July 23, 2009). The purpose of the map is to illustrate the trail network in both Mt. Ashwabay and Pike's Creek. Trail data provided by Bayfield County Forestry Department and John Telford.

